



U.S. Department of the Interior
Bureau of Land Management

Understanding Alaska's Wildland Fire Response

Presented by Jake Dollard, BLM Alaska Fire Service Associate Manager



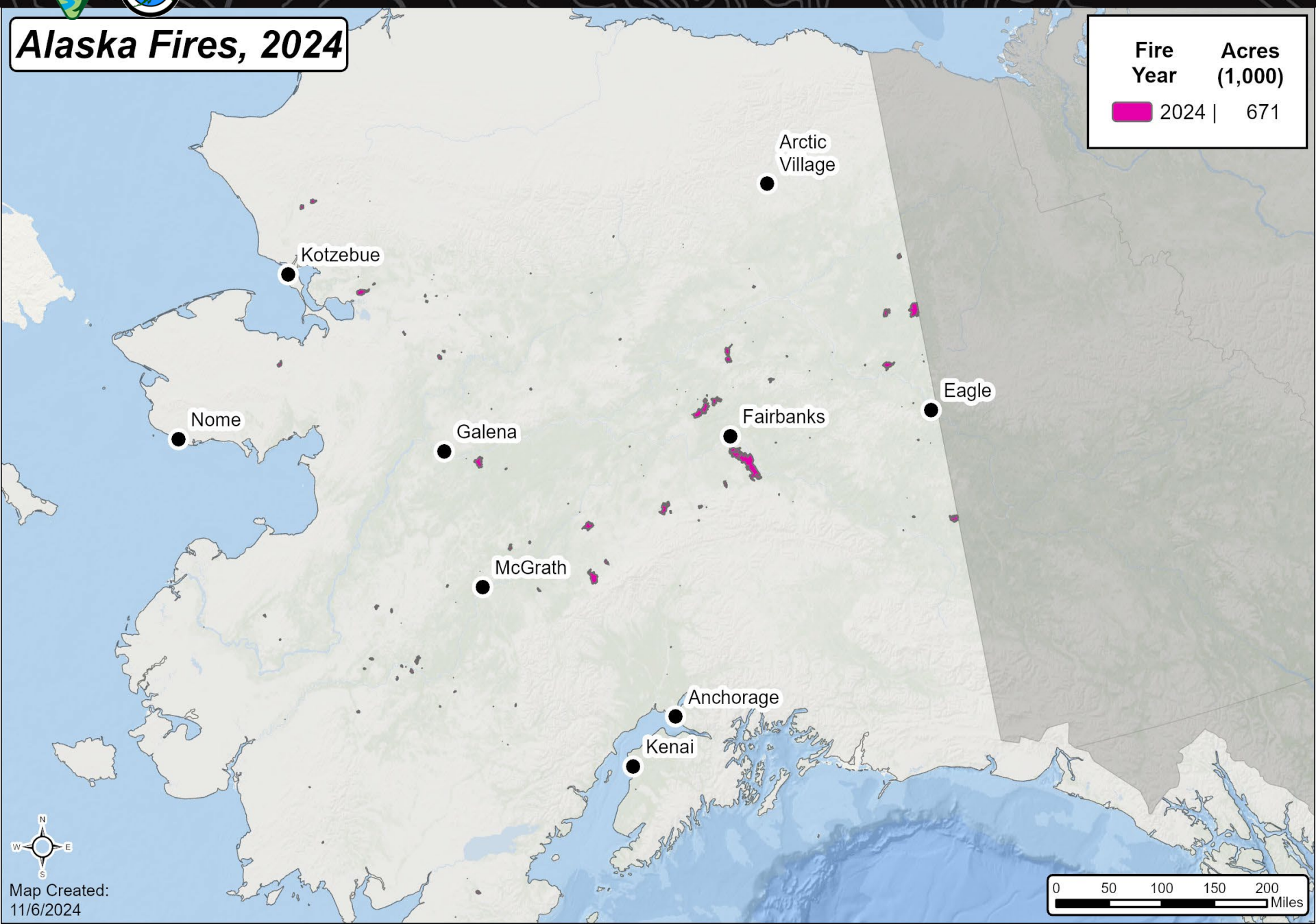
*Smokejumpers land near
Riley Fire on June 30.
NPS Photo*



U.S. Department of the Interior
Bureau of Land Management

Alaska Fires, 2024

Fire Year	Acres (1,000)
2024	671



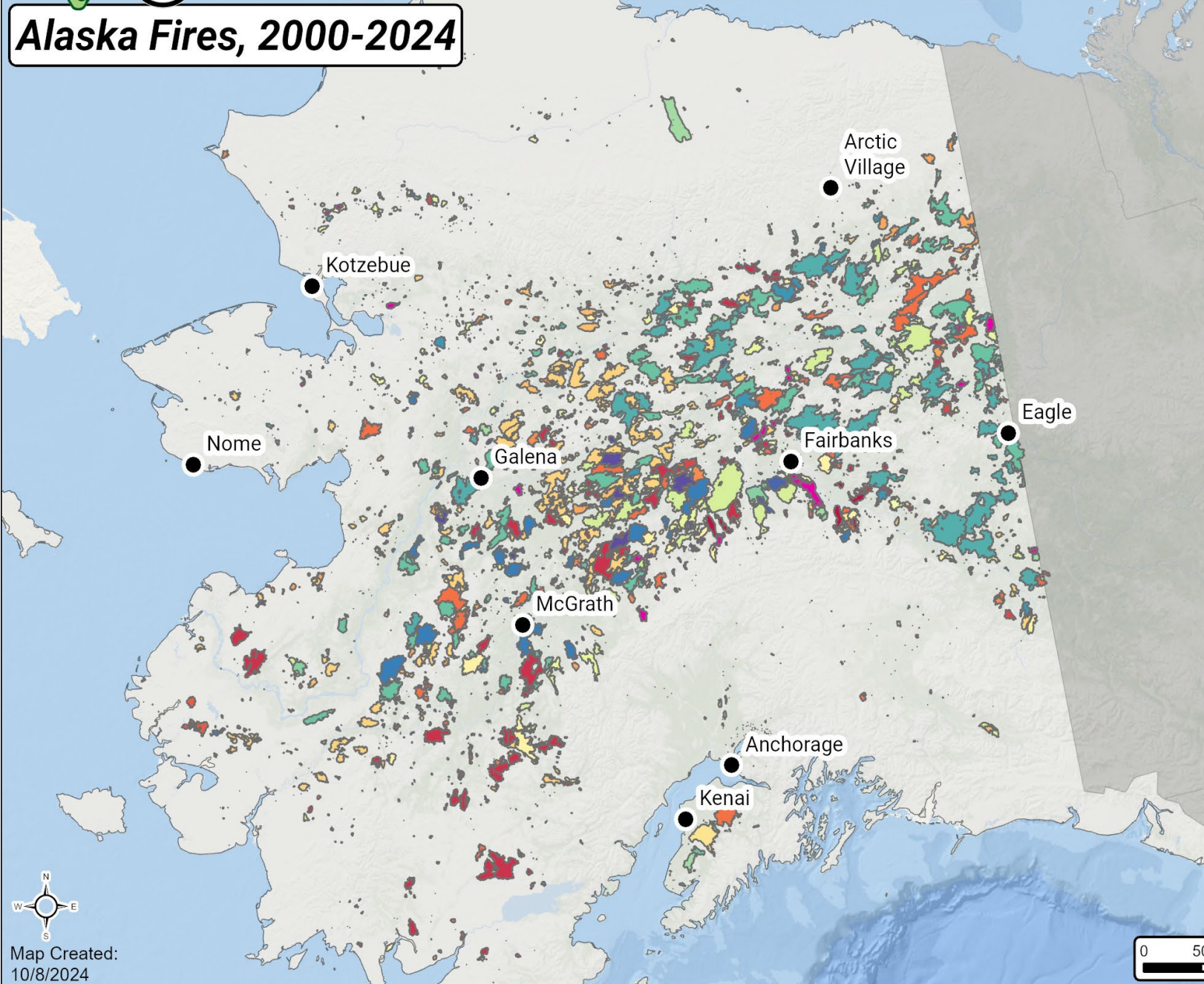
Map Created:
11/6/2024





Alaska Fires, 2000-2024

Fire Year	Acres (1,000)
2024	671
2023	295
2022	3,113
2021	255
2020	181
2019	2,589
2018	411
2017	646
2016	500
2015	5,111
2014	234
2013	1,316
2012	287
2011	293
2010	1,125
2009	2,935
2008	104
2007	649
2006	266
2005	4,650
2004	6,590
2003	603
2002	2,183
2001	216
2000	756





Alaska Fire Protection Zones

Alaska Fire Protection Responsibilities

-  Bureau of Land Management
191.9 Million Acres
-  State of Alaska
154.3 Million Acres
-  US Forest Service
28.3 Million Acres





Who We are



385 positions

Mostly Career Seasonal,
approximately 90 PFT and about 30 temps



Operations

Three crews, 80+ smokejumpers, 20+ Fire Specialists
Several Type 2 Contract Hand Crews in rural Alaska



Aviation

Fire: Seven helicopters, 15 airplanes, 11 UAS (drones)
Non-Fire: Four helicopters, two (LEO) airplanes



Support

AFS Cache, logistics, IT, admin



\$29 million annual budget

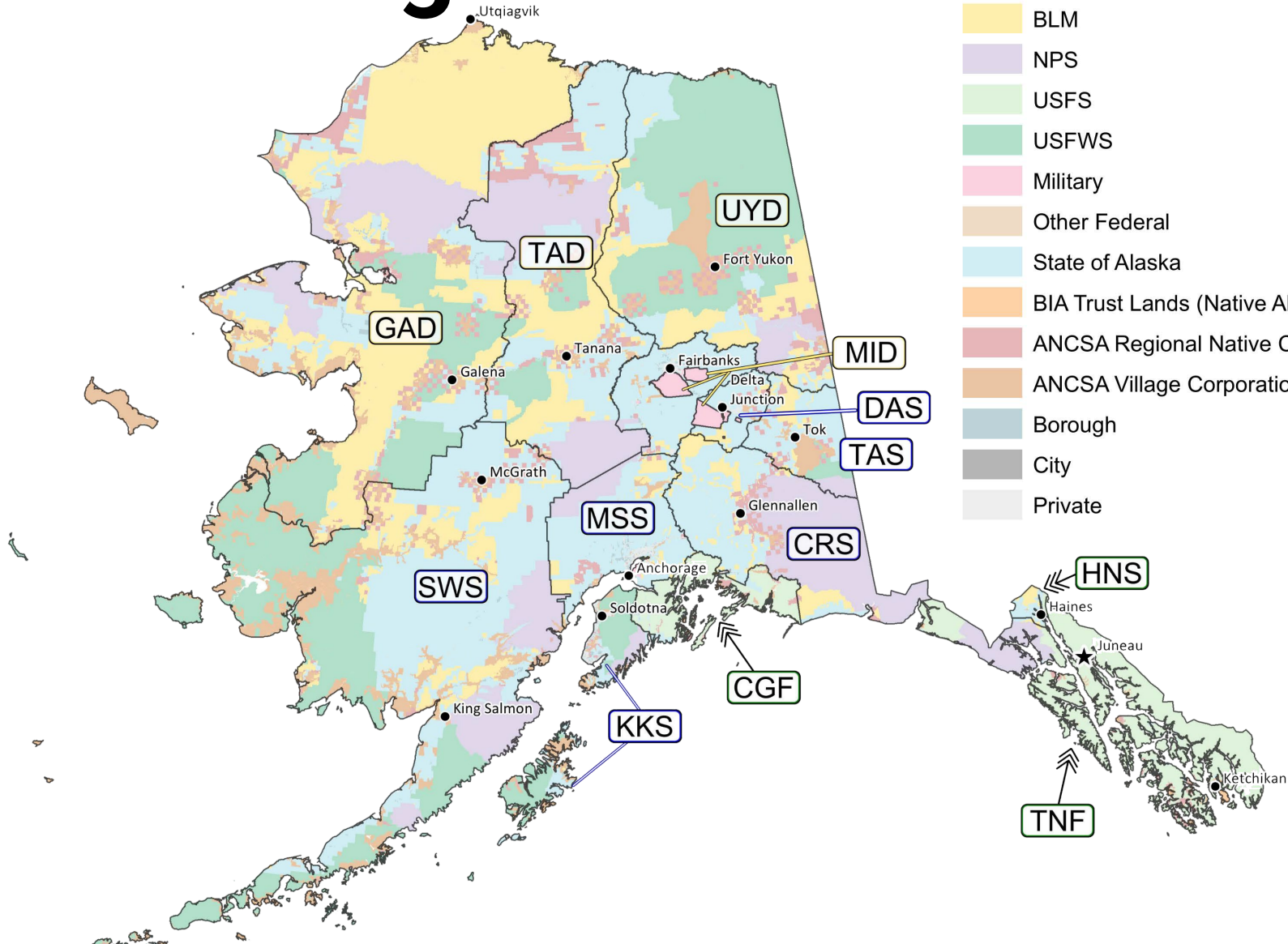




Intermingled Lands

Alaska Land Ownership Owner / Manager

- BLM
- NPS
- USFS
- USFWS
- Military
- Other Federal
- State of Alaska
- BIA Trust Lands (Native Allotment)
- ANCSA Regional Native Corporation
- ANCSA Village Corporation
- Borough
- City
- Private





Alaska Master Agreement and Operating Plan

Both delineate interagency fire management responsibilities:

- ✓ **Jurisdictional Agency:** Land and resource management responsibility for specific geographical area (NPS, FWS, BIA, BLM, Alaska DNR, ANCSA Corporations)



The Alaska Interagency Management Team explains to State of Alaska, BLM and DoD agency administrators strategy to manage a fire burning on military training lands in 2019.



- ✓ **Protecting Agency:** Provide wildfire suppression services to all jurisdictional agencies in a geographical area regardless of jurisdiction (BLM Alaska Fire Service, Alaska Division of Forestry & Fire Protection, US Forest Service)





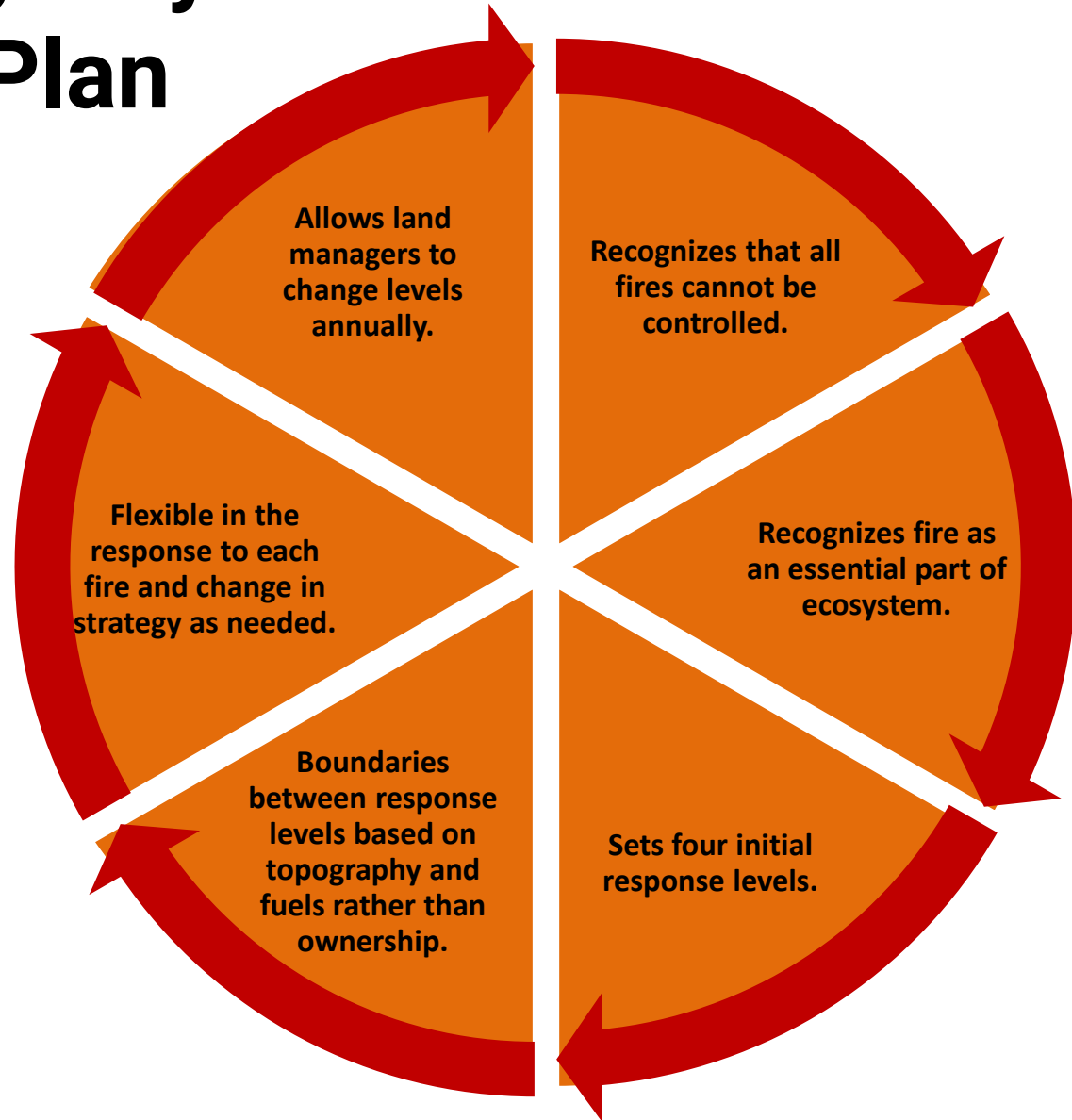
Alaska Interagency Wildland Fire Management Plan



Structure protection using sprinklers on recreational cabin threatened by the McDonald Fire in 2024.



BLM AFS and NPS firefighters pull equipment from the Dry Creek Fire south of Manley on Aug. 8, 2021.





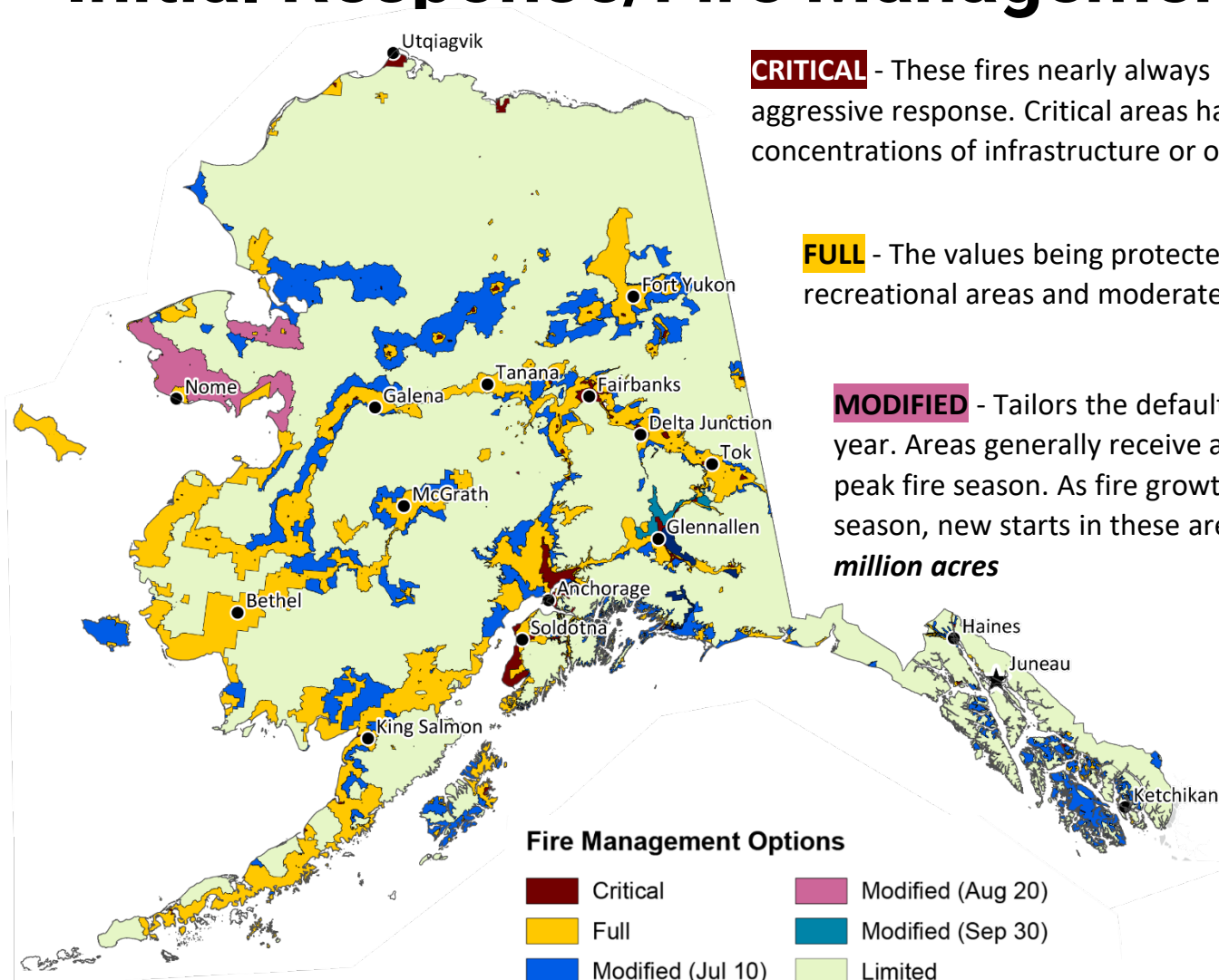
Initial Response/Fire Management Options

CRITICAL - These fires nearly always receive an immediate and aggressive response. Critical areas have the highest populations and concentrations of infrastructure or other values at risk. **3.5 million acres**






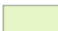

FULL - The values being protected may include historical sites, recreational areas and moderately populated areas. **55.5 million acres**

MODIFIED - Tailors the default initial response to the time of the year. Areas generally receive a Full suppression response during the peak fire season. As fire growth potential decreases later in the season, new starts in these areas are often monitored instead. **43.7 million acres**

LIMITED - Fires in the Limited option are the lowest priority and are generally allowed to play their natural role. The default response for new starts is to monitor and provide site protection as needed. **268.3 million acres**



Fire Management Options

- | | | | |
|---|-------------------|---|-------------------|
|  | Critical |  | Modified (Aug 20) |
|  | Full |  | Modified (Sep 30) |
|  | Modified (Jul 10) |  | Limited |
|  | Modified (Aug 10) | | |



U.S. Department of the Interior
Bureau of Land Management

McDonald Fire



Riley Fire

